

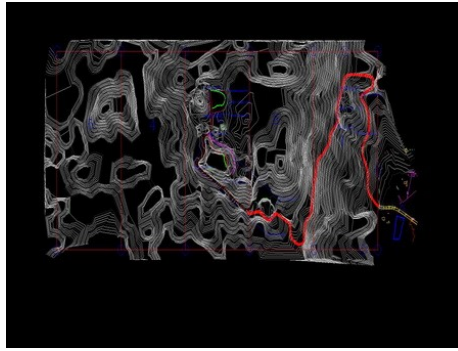
Company Profile

Website: www.miningcorp.co.th

Fanpage: www.facebook.com/miningcorp

Line ID: @miningcorp

Email: admin@miningcorp.co.th



Quarry and Mine Services by Miningcorp.

Company Profile

Mining Corporation Company Limited was established on December 1, 2009. The objective is Center of Quarry and Mines Business and also related fields. We would like to emphasize these Quarry and Mines in terms of increasing their productivities and competitions by specialized technical mining, related fields of engineering with personnel from mining engineering, mining technician, trained staff from the Department of Primary Industry and Mine as well as experienced direct employees. The company aims to move forward to a service task in the business of mining and quarry delivers (One Stop Service) with focus on security and correctness in engineering concepts (Safety and Smart Work).

Registered Address

59/162 Moo 4
Banglen Sub-District
Bangyai District
Nonthaburi Province
Thailand 11140

Office

111/82 Moo 11
Phraphutthabat
SubDistrict
Phraphutthabat District
Thailand 18120

Tel. : (66) 0-3667-0855

Fax.: (66) 0-3667-0854

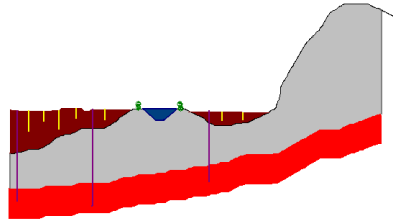
Registered Capital : Baht 2 Million

Director : Mr. Smacha Pimton

Core business : Quarry and Mines in terms of
Consultation, Project Planning and Contractor
Other business : PIMTON Safety Shoes

Services

Website: www.miningcorp.co.th
Fanpage: www.facebook.com/miningcorp
Line ID: @miningcorp
Email: admin@miningcorp.co.th



Quarry and Mine Services by Miningcorp.

Services

- Feasibility Study, Project establish planning, Quarry and Mine Planning, License Document Preparation
- Quarry and Mine Contractor in terms of Development, Site Preparation, Hauling road preparation, Drill and Blast, Crushing Plant Operation and etc.
- Site Preparation in Dam and Plant Construction
- Supply Air Compressor with accessory for rent
- “PIMTON” Safety Shoes

Machines

Website: www.miningcorp.co.th
 Fanpage: www.facebook.com/miningcorp
 Line ID: @miningcorp
 Email: admin@miningcorp.co.th



Quarry and Mine Services by Miningcorp.

Main Machines

- | | |
|------------------------------------|---------|
| • Pneumatic Drill Furukawa PCR 200 | 2 units |
| • Hydraulic Drill Furukawa HCR 180 | 2 units |
| • Hydraulic Drill Furukawa HCR 9 | 3 units |
| • Air Compressor Airman PDS 655 | 2 units |
| • Air Compressor Airman PDS 175 | 2 units |
| • Jack hammers with accessories | 4 units |
| • Back hoe CAT 320 D2 | 1 unit |

Jobs Reference

Website: www.miningcorp.co.th
 Fanpage: www.facebook.com/miningcorp
 Line ID: @miningcorp
 Email: admin@miningcorp.co.th



Quarry and Mine Services by Miningcorp.

Jobs Reference

- Quarry Drill & Blast, Exc. & Haul 100,000—150,000 tpm
Chiangrai Land Associates Co., Ltd Chiangrai
- Quarry Drill & Blast 100,000—150,000 tpm
Sahasilapermpool Company Limited Saraburi
- Quarry and Plant Operation 30,000 tpm
T.S. Granite Company Limited Petchaburi
Silamaetor Company Limited Tak
- Drill & Blast Labor Supply
Asia Cement Public Company Limited Saraburi
- Off-highway trucks drivers Supply
Asia Cement Public Company Limited Saraburi
- Drill & Blast for foundation Construction
Amata City Factory Estates Cholburi
- Railway Station extension work
State Railway of Thailand Saraburi
- High tensile strength bolts & nuts Supply
State Railway of Thailand Bangkok
- And etc. (for mining license documents)

Management

Website: www.miningcorp.co.th
 Fanpage: www.facebook.com/miningcorp
 Line ID: @miningcorp
 Email: admin@miningcorp.co.th



Quarry and Mine Services by Miningcorp.

Director Profile

Managing Director

Mr. Smacha Pimton

Mining Engineer

Bachelor's degree in Mining Engineering, Chiangmai University (1986-1989)

License for Professional Practice : Charter Engineer (Third Level) No. 19 (Since 2005)

Work Position :

2009-existing	Director	Mining Corporation Co., Ltd.
2006-2008	Director	Inline Mining and Transport Co., Ltd.
2004-2005	Operation Director	Sahasilapermpool Co., Ltd.
2002-2003	Quarry and Plant Mgr.	Tungkha Harbour Plc.
1998-2001	Head of Mine Planning Section	Lanna Resources Plc.
1994-1997	Mining Division Mgr.	Padaeng Industry Plc.
1990-1993	Mining Engineer	Electricity Generating Authority Of Thailand

Business Development Director

Mr. Thanakris Tejawarongkha

Bachelor's degree in Laws, Sukhothai Thammathirat Open University (2012)

Master's degree in Science (Petroleum Geosciences), University Brunei Darussalam (1996)

Bachelor's degree in Science (Geology), Chiangmai University (1987)